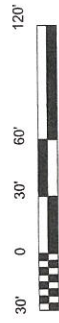


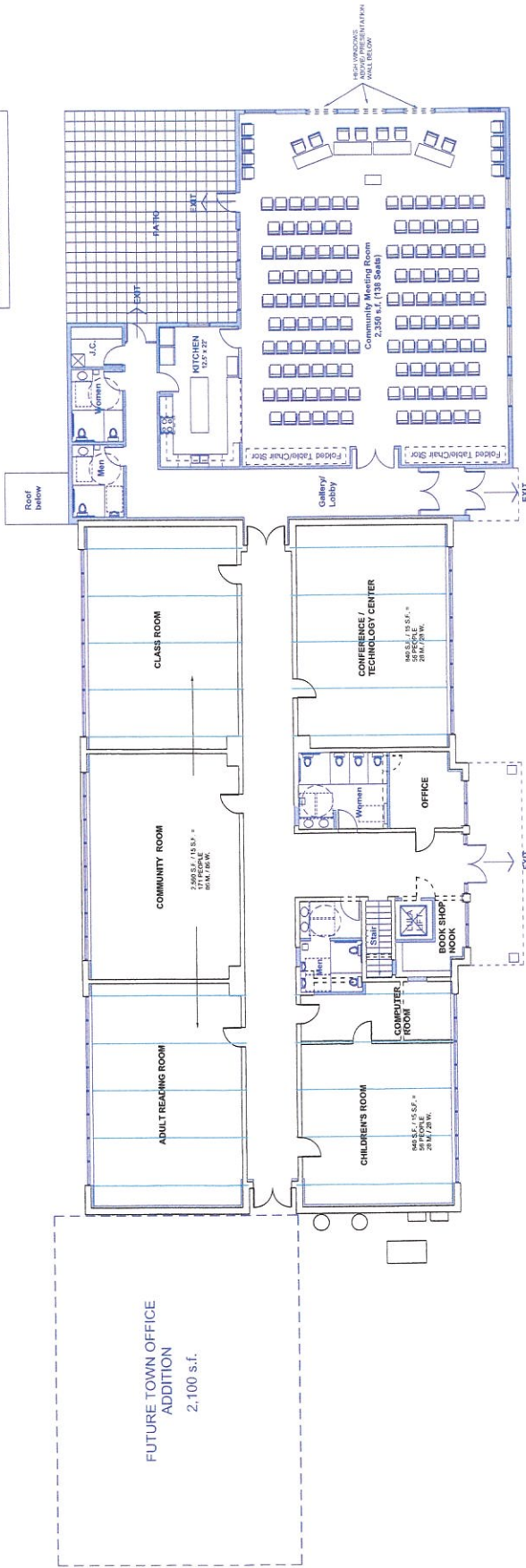
CONCEPT SITE PLAN



RENOVATIONS &
ADDITIONS TO:
**GILFORD
BUTLER
SCHOOL**
South Thomaston,
Maine

Drawing Title: Scale: 1/8" = 1'-0"
GROUND LEVEL
FLOOR PLAN
A1.1
Date: 01.29.25
Phase: PROGRESS SET

Table Requirements for this room for
187 Men / 158 Women
Washing Toilets
Men - 2 Toilets / 2 Urinals
Code classified use as Assembly
3,359 s.f. divided by 7.5 f. persons = 336 occupants.
Over 50 people requires two exits.



UPPER LEVEL FLOOR PLAN

COMMUNITY ROOM
ADDITION
3,590 s.f.

FUTURE TOWN OFFICE
ADDITION
2,100 s.f.

RENOVATIONS &
ADDITIONS TO:

**GILFORD
BUTLER
SCHOOL**

South Thomaston,
Maine

Drawing Title: Scale: 1/8" = 1'-0"

LOWER LEVEL
FLOOR PLAN

A1.2

Date: 01.29.25
Phase: PROGRESS SET

Toilet Requirements for this room for
148 Men / 148 Women
Women- 4 Toilets
Men- 2 Toilets / 2 Urinals

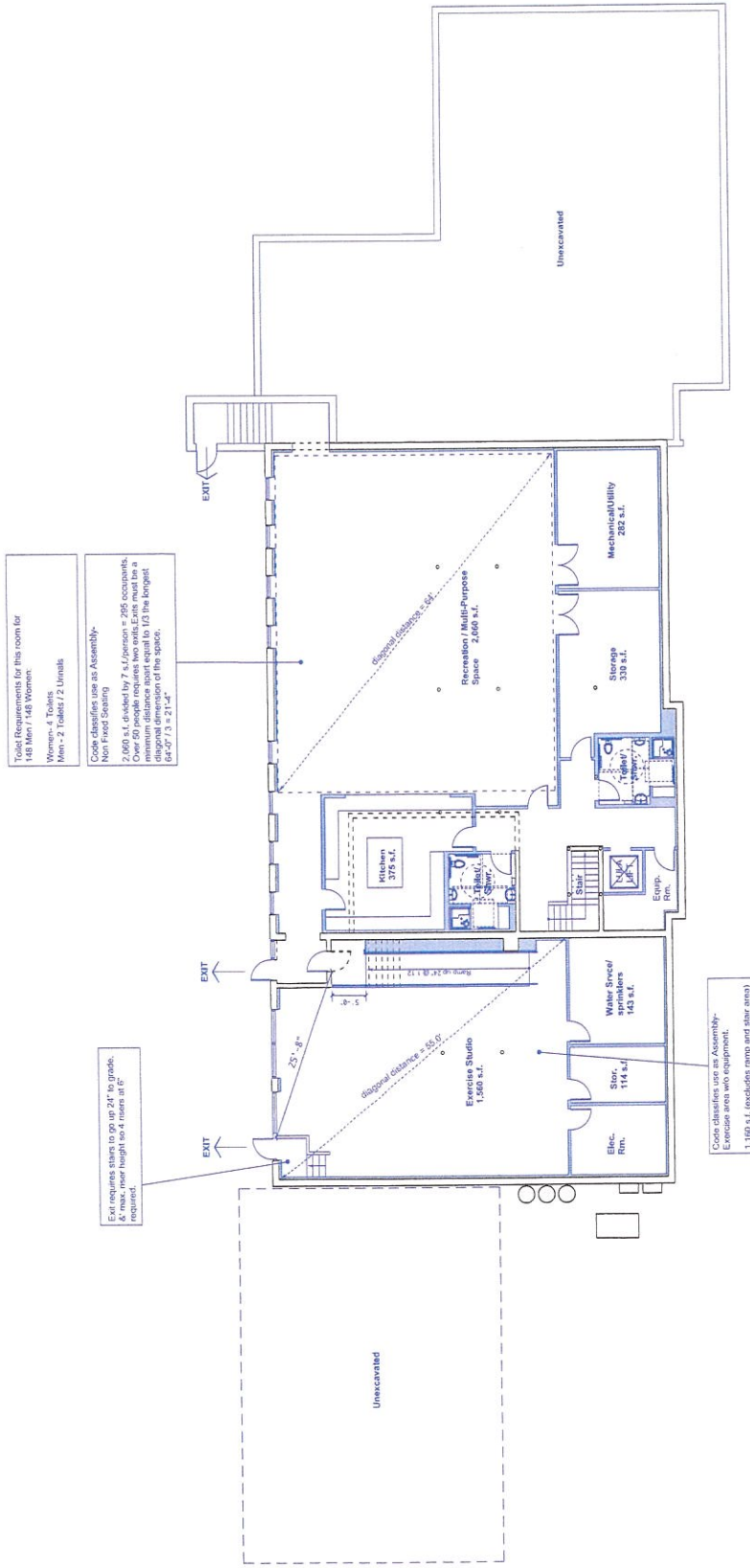
Code classifies use as Assembly-
Non Fixed Seating
2,000 s.f. divided by 7 = 286 occupants.
Over 50 people requires two exits. Exits must be a
minimum of 5'-0" wide. Exits must be the longest
diagonal dimension of the space.
55'-0" / 3 = 18'-0"

Exit requires stairs to go up 24" to grade,
& max. riser height no. 4 risers at 6"
required.

Code classifies use as Assembly-
Exercise area w/o equipment.
1,580 s.f. / 15 s.f./person = 105 occupants.
Over 50 people requires two exits.
Exits must be a minimum distance
of 5'-0" wide. Exits must be the longest
diagonal dimension of the space.
55'-0" / 3 = 18'-0"

Toilet Requirements for this room for:
38 Men / 38 Women
Women- 2 Toilets
Men- 1 Toilet / 1 Urinal

LOWER LEVEL FLOOR PLAN





 Winton Scott
Architects